



PARASCADD Private Limited

Technology Ideas, Products, Services & Solutions for EPC Industry

An SEI-CMM Level 5 Company
ISO 9001-2015 Certified Company



Infusing Efficiency Through Innovation



Introduction

PARASCADD is an Integrated EPC software Solutions Provider company, focused on software solutions development and advanced process automation for EPC / EPCM / LSTK & construction projects, end to end project management tools, data analytics, artificial / power intelligence tools catering to mega projects in Oil & Gas, Petrochemical, Chemicals, Fertilizers, Cement, & Power Sectors. We help businesses by facilitating access to professional software/web solutions and services.



PARASCADD is an **ISO 9001-2015** certified company ensuring quality standards of a sophisticated IT Company. PARASCADD is also a **SEI-CMM Level 5** company with software quality and capability to deliver large projects. We have delivered very large projects to various EPC industry clients including government and large private companies.

We at PARASCADD guarantee our customers Quality, & Reliability with our experience and background of 20 years in the industry.

With **400+ employees**, we have served in **25 countries** and completed **5000+ projects**.

Vision & Mission



VISION

"Creating excellent value for customers worldwide by providing innovative and customized software solutions to change systems and processes for the better"



MISSION

"To offer Integrated EPC software Solutions with enhanced customer service, constant innovation, high quality and dedicated commitment in the field of Engineering, Procurement, Construction & Project management"

PARASCADD Values

Automating Automation

Automating automation is our priority. From task clarification to implementation, we offer end to end software solutions. We specialize in providing automation of manual processes, integration of existing software or methods, standardization of working methods, learning, reference, and evaluation of the previous projects. Combining our experience for optimization, we work across all disciplines of Engineering and construction. Most importantly, each function is headed by industry experienced and qualified engineers with the relevant domain expertise.

Integration

Most organizations use standard software, while some use customized software or a combination of both. At Parascadd, we offer a complete integration system with existing standard software or with the in-house developed software. Thus, our integrated software solutions make us unique and inspiring.



Passion at Work

We go that extra mile to reach out to customer's needs. We are experts at understanding the industry and every detail of the business. In this niche market, we take pride in our core expertise, in-depth domain knowledge and are extremely passionate about automating the work processes. That's why we are most eager to offer customized solutions from task clarification to implementation.

Cost Advantage

- Integration
- Customization
- Training
- Maintenance
Updates

Product Advantage

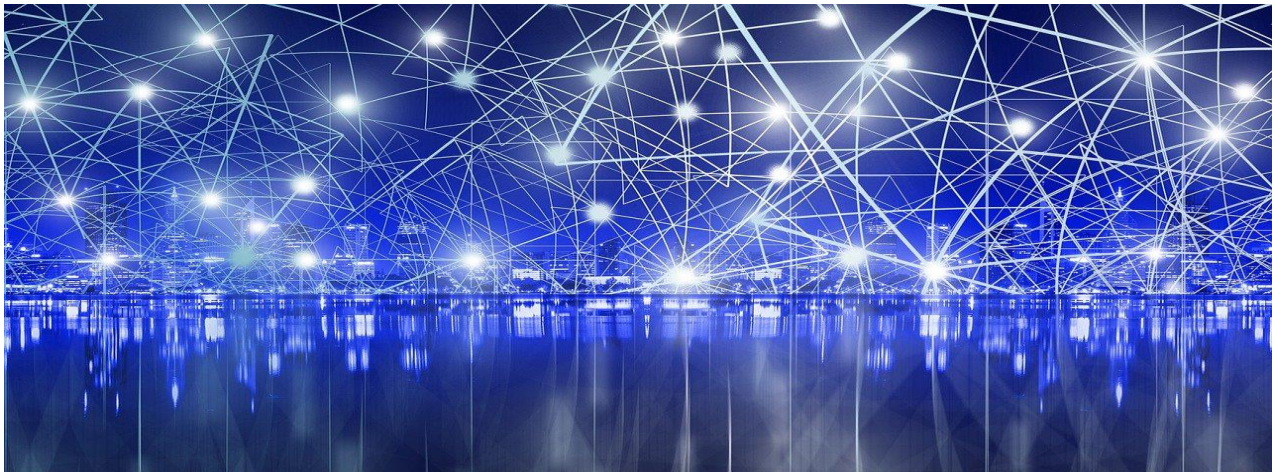
- Integration with in-house software and standard software used.
- Thorough extensive Research and Development
- Automation of all manual work and processes
- Collaboration/Communication System driven work/Process methodology
- Single point data for the project/Documents/Company

Business Advantage

All the requisites for smoothly bringing your business up to speed are covered

- Business requirements
- Technology requirements
- Ease of Use
- Flexible Licensing
- Policy (online, site, etc.), Paperless office/Documentation.

Certificates





Products

We offer software products for most of the EPC Industry disciplines. These products have been created from our experience of 20 years in the industry. We offer all our fully integrated EPC Software via PGold platform.



PARASCADD Gold offers EPC Cloud Software

PGOLD offers following features:

- Organogram,
- RAM: Resource Allocation Module,
- Time Sheet,
- Invoice / Bill & File Tracking Systems,
- Employee Performance Management,
- Resource Pool / Balancing,
- Employee Travel Management,
- Minutes Of Meetings

Platform Availability for EPC Software

On Customer Cloud:

PGOLD is available for deployment on Your Cloud Servers Infrastructure. So, you can use it from within your organization.

On PARASCADD Cloud

PGOLD is available for deployment on Our Cloud Servers Infrastructure. And You can use it via a browser from your organization.

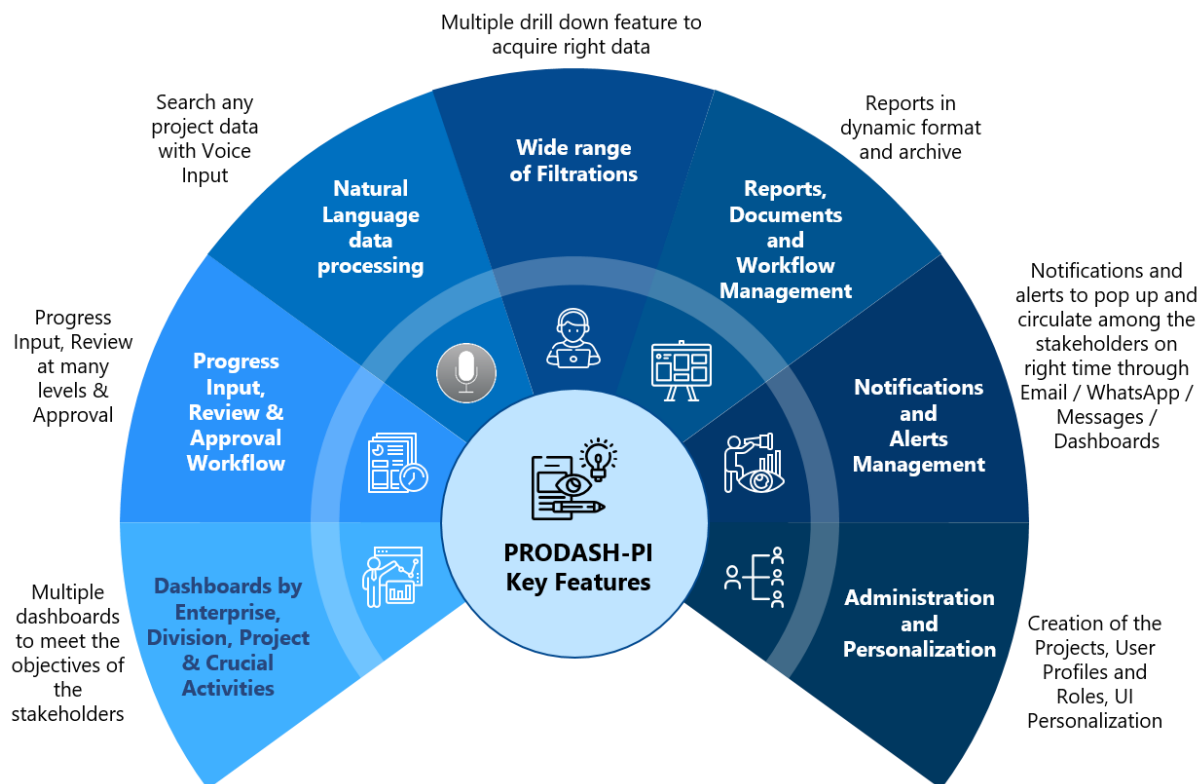
On Premise

PGOLD is available for deployment on Servers in your premises within your LAN/WAN. So you can use it from within your organization.



Interactive Project Management Dashboard with Power Intelligence

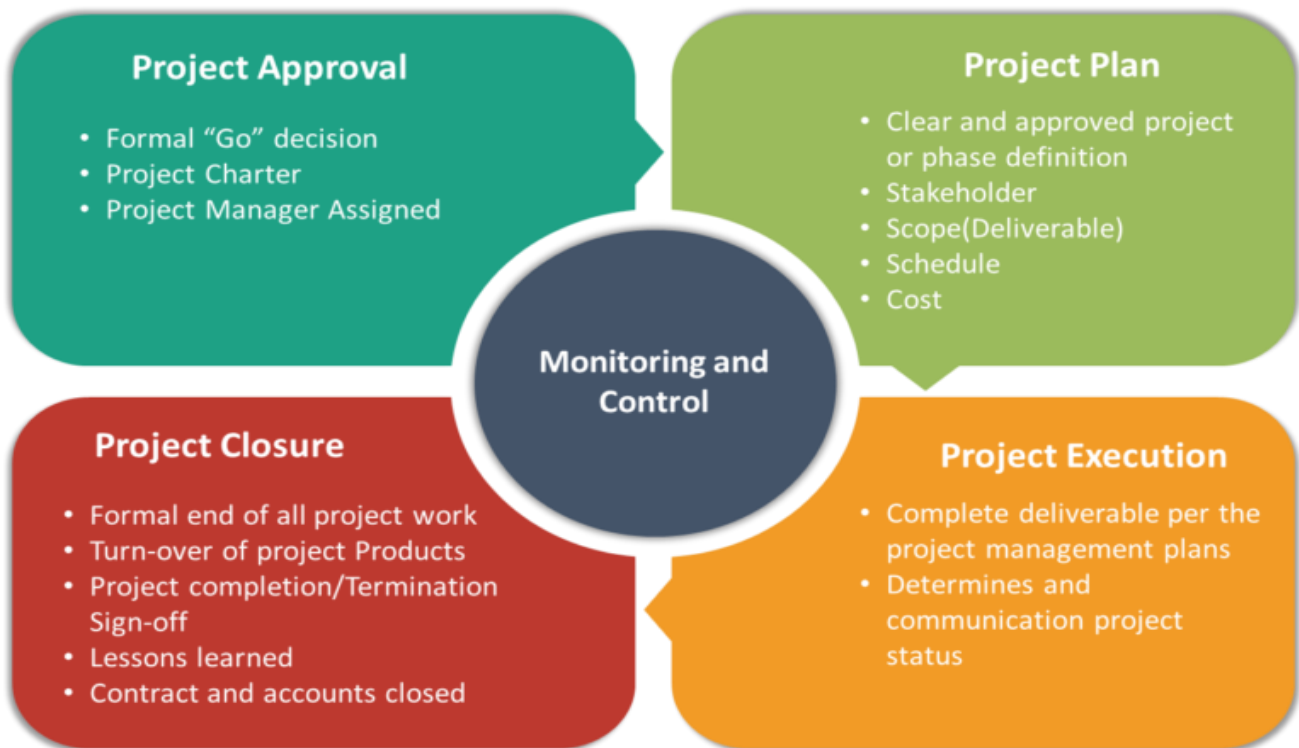
Graphical interactive analytical Dashboards and reports for all functions of a Project like Schedule and Cost performance, Risk, HSE, Quality, Finance etc. during all phases execution in Infrastructure, Oil & Gas, Petrochemicals, Offshore Platforms, Fertilizers, Pipelines, and Infrastructures sectors. User friendly dashboards giving summary of key milestones at Unit level as well as for Overall Project.





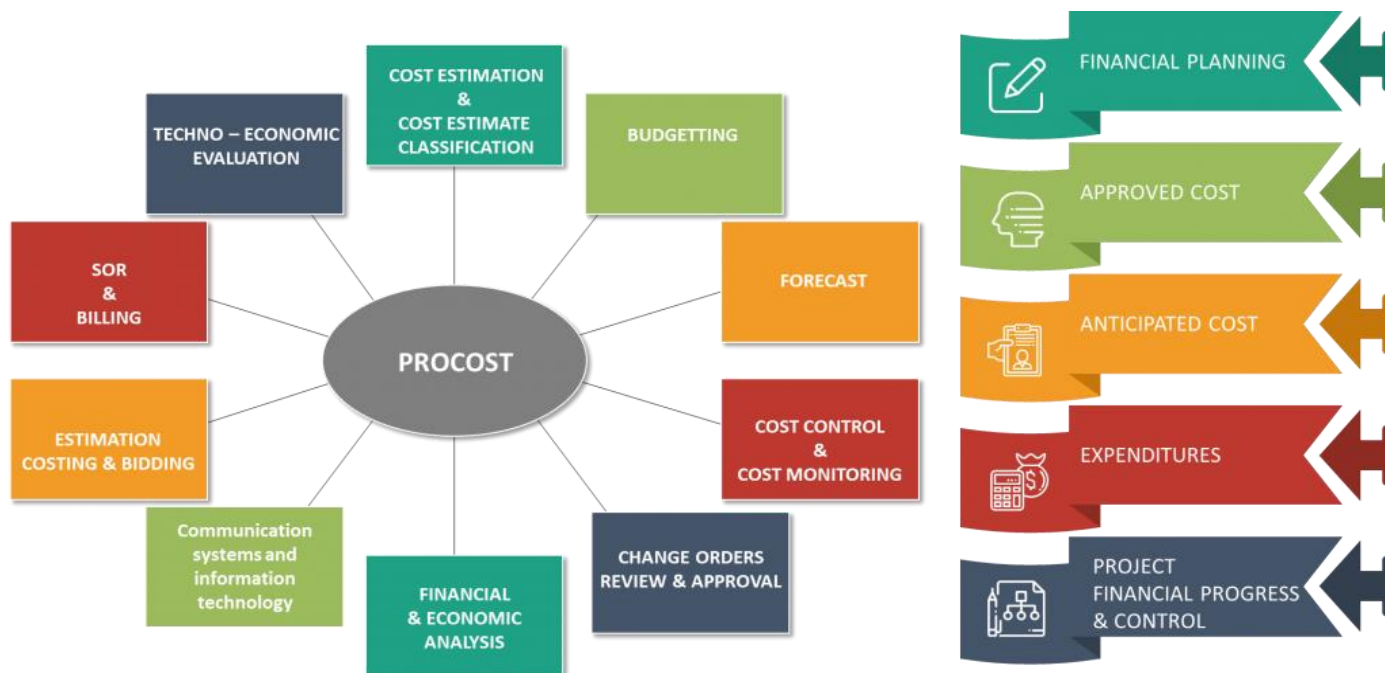
End to End Project Management Office Suite

End to End Project Management Office software is the need for EPC organizations worldwide. PARASCADD ePMO Software offers the PMO group to set, maintain and ensure the standards for Project Management.





Project Costing & Management

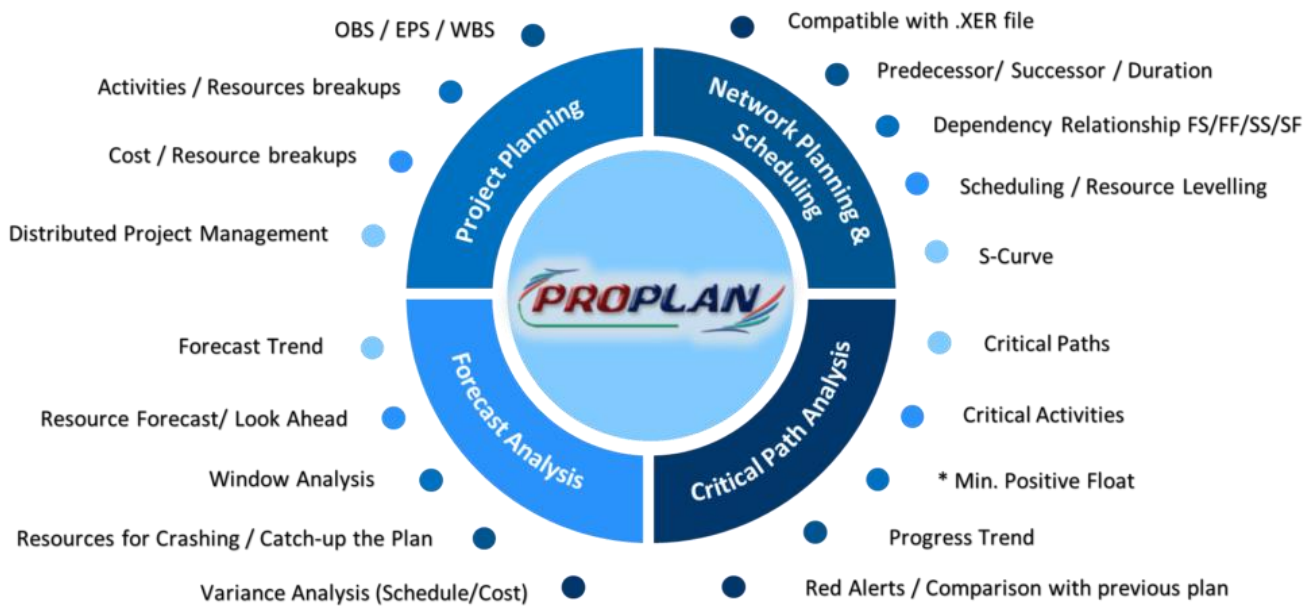




Project Planning and Scheduling Software

A Planning and Scheduling Network System for Project Planning and Control (covering Time, Cost and Quantity with resource loading) for various phases of the Project execution.

PROPLAN is a software solution for Planning, Scheduling, Controlling and Monitoring the detailed level activities of the various project functions such as Engineering, Ordering, Manufacturing and Delivery, Tendering, Construction, Commissioning, Close-out etc. and displaying the progresses by Scheduled versus Actual comparisons in the graphical reportable formats.

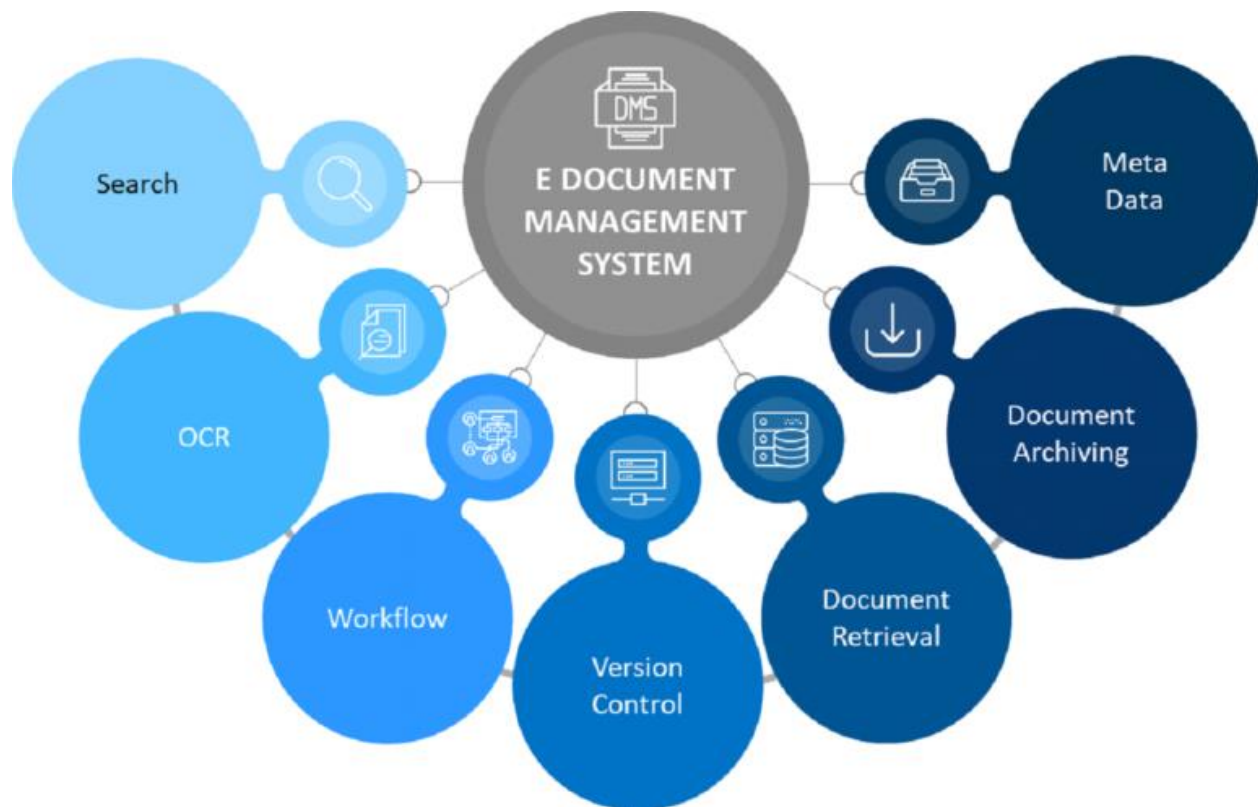




Document Management System with Hold Management

PRODOCS is a Document Management software (DMS) used to manage, track, and store the electronic documents of paper-based information captured through the mediums like document scanner, Mailboxes, Websites, Office tools, Integration tools, etc.

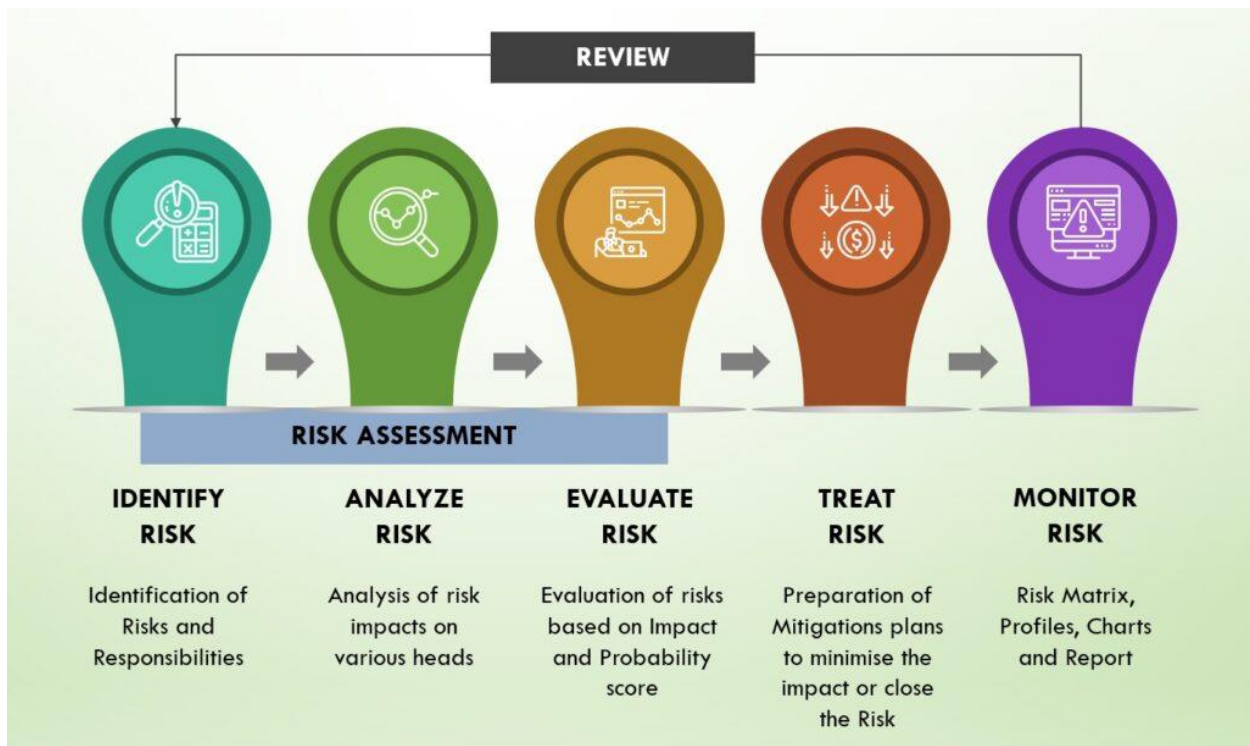
This Document Management software (DMS) controls and organizes documents throughout an organization. It incorporates document and content capture, workflow, document repositories, Output systems, and information retrieval systems. It also contains the processes used to track, store, and control the documents.





Project Challenges/Risk Management

Risk Management, Risk Identification and Categorization, Risk Assessment and Quantification, Risk Documentation (Risk Register), develop Risk Mitigation and Implementation Plans, Calculation of Risk Score using empirical formulas, Risk Monitoring and Reporting in specified formats including Risk Matrix, Graphs. etc.





Health, Safety, and Environment (HSE). Various national and international approaches (terminology) being used for proper assessment of HSE measures being taken during various phases of the project execution especially at construction sites.





8

Construction Schedule & Contractor Schedule System

COCOSYS is a Construction Schedule & Contractor Schedule System for managing all types of the construction tenders awarded into the Projects. The system is featured to monitor and track the Scope & Progresses of the Work Items belongs to the construction tenders. The Work Items are also monitored and tracked by the disciplines such as Civil / Structural / Mechanical / Piping / Electrical / Instrumentation / Commissioning.



9

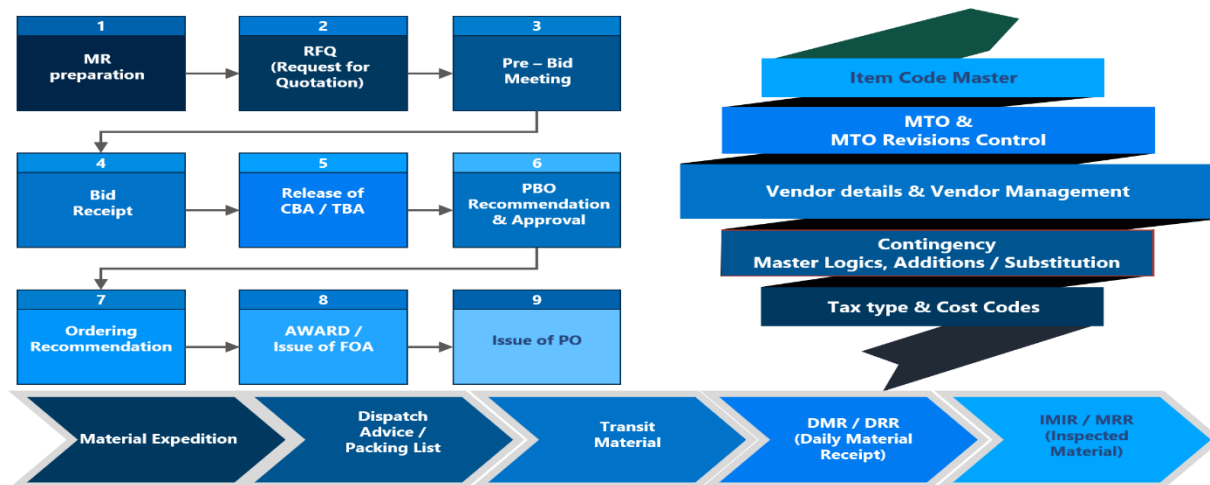
Construction Simulation, Planning & 3D Graphics

Construction Simulation, Planning & 3D Graphics based Construction Sequencing, Colour Code representation for live Construction Progress, MTO & Design parameters/attributes extraction from 3D model, Work Front generation.



Procurement & Tender Management System

EPCROMA is a Software for Integrated Procurement Management, Tender Management, Material Management and Warehouse Management at project and organization level. Complete Procurement Management Cycle involves an activity of Engineering MTO / MR, floating RFQ, bid receipt, Evaluation, bid opening, Recommendation to award, Release of FOA / Purchase Order, Vendor Expediting, Post order tracking, Receipt and Inspection of the material, Material storage, Issuance, Stock transfers, Donation / Substitution of the Items, Surplus material management, etc.





Material Analysis & Look Ahead Plan

It provides analysis / reports w.r.t MTO vs. PO/CDD/ETA/Transit/DRR/MRR and generates list of lines for which materials are fully available. It also generates lists of lines for which materials are partially available or not available at all.

Key Benefits

- It will help EPCM/EPC/Fabricator to plan the work properly
- It will help EPCM/EPC/Fabricator to plan the work properly
- Make proper deployment plan for manpower & machinery
- Ensure optimum utilization of resources

Beneficiary Department / Team

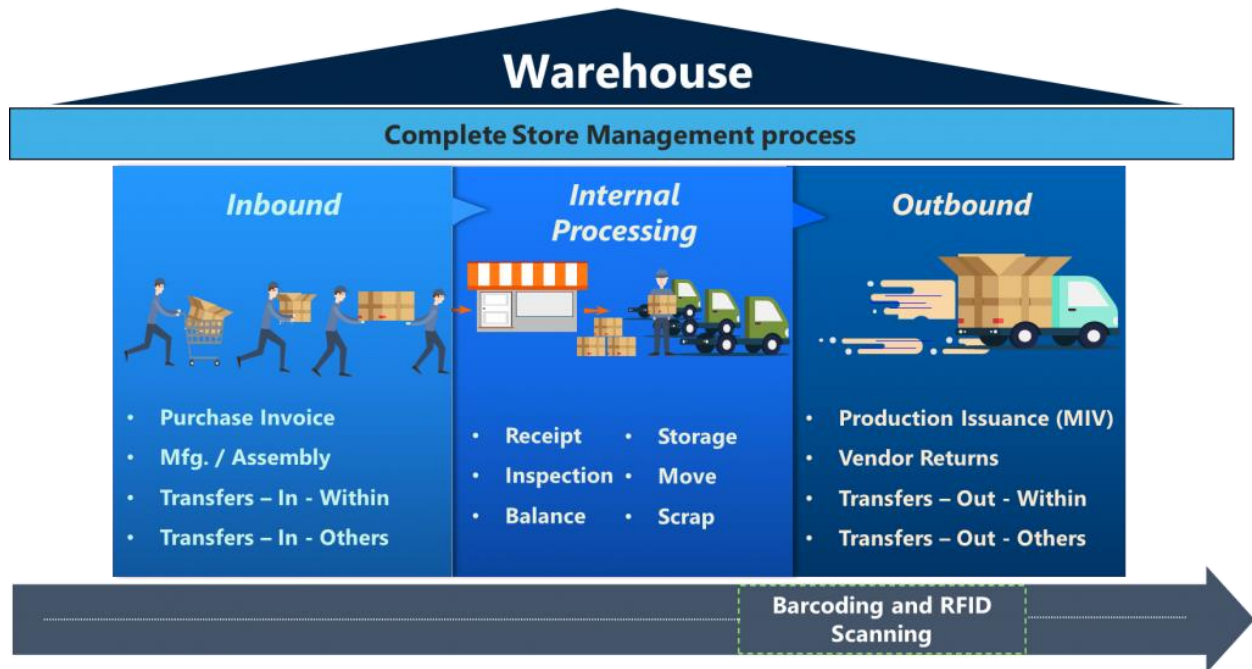
Project, Project Control, Procurement, Fabrication, Erection

Beneficiary Organization

EPCM/EPC/ Fabricator & Owner



Warehouse Accounting Management





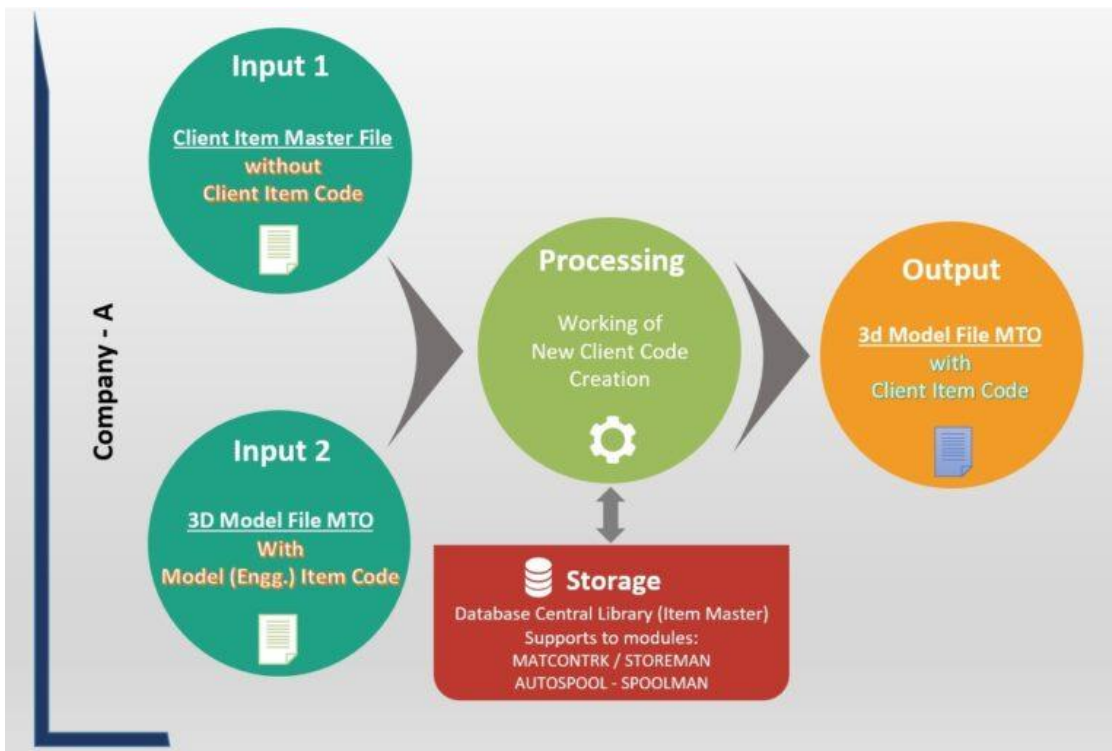
Item Code Generation Program

ICGP is a software for generation of new Item Code creation of equivalent Item-code as per the company norms. Item codes are generated by reading standard parameters of item descriptions like Item type, Item sub-type, nominal size, schedule/rating, material description/material grade, thickness, diameters, special remarks, etc.

Item Code Generation Software follows a logical process for code generation, where a variety of rule logic can be created to obtain the desired new codes. Code Generation Software takes care of all Item Codification activity required for generating & updating the central library of Item-Master which is used in EPCROMAN.

What Does ICGP Do?

Item codes creation (Client specific) / standardization / mapping of engineering and so on.





Piping Isometric Drawing Software

ISOMEC is automated, rule-based, and specification driven according to the industry standard. Various Thickness Calculations as per ASME 31.1, 31.3, 31.4. Valve Material Sheet generation, Initial/estimated MTO, as well as various reports generation like PMS, VMS, Thickness Calculation, Spec Index, etc.

It is also used for making automatic Piping Isometric drawings, Piping Spool drawings, the Bill of materials, and reporting from the outline of isometric. This specific piping drawing application for Piping Engineering takes care of the complete Isometric drawing and related documents and deliverables.

ISOMEC helps in achieving the maximum standardization, resulting in greater productivity and profitability.

Highlights

- Catalogue ASME B16.9/ B16.11 etc.
- Item code generation as per the catalogue Item
- Calculation as per B31.3 (Piping) / B31.4 (Pipeline)
- Piping Material Specification (PMS)
- Valve Material Sheet (VMS)
- Initial or Estimated MTO
- Generation of piping ISOMETRIC from Outline of Iso's
- Interface with third party application's

AUTOSPEC (Piping Material Specification)

This module is used for creating piping material specification from the component catalogue along with component dimensions. The component catalogue can be updated with piping items which are saved logically using breakup parameters like Item type, base material, material grade, material description, dimensional standard, short / long description, size, thickness / rating / schedule, end conditions etc. Components belonging to a piping class can be selected from component catalogue. One can query on piping parameters to filter out the specific item of the specification.



EMM (Engineering Material Management)

Engineering Material Management used for creating Valve Material Sheet (VMS).

It is also designed for various thickness calculations like:

- Pipe wall thickness suitable for Internal Pressure as per standard ASME B31.3 / ASME B31.1/ ASME B31.4
- Pipe wall thickness suitable for Indian boiler regulation (IBR)
- Pipe wall thickness suitable for Vacuum as per standard ASME BPVC SECTION VIII
- Pipe wall thickness verification for Pipe-to-Pipe branch connection as per standard ASME B31.3

ISOMEC (Quick Isometric Drawing Routing)

ISOMEC is a piping engineer's software used for making piping isometric drawings, piping spool drawings, bill of materials, and reports automatically from the outline of piping routing reference. The software is specification driven, rule-based, and automated for routing intelligent piping isometrics. The piping components used in the isometrics are supported with dimensions and annotations with the objective to maximize automation and improving productivity.

Benefits of Isometric Drawing Software

- Cost saving, it doesn't require CAD for implementing the ISOMEC.
- Time Saving, This EPC software is specification driven. Just a rough sketch is required to turn the work that normally takes hours into minutes.
- 75% of the time can be saved with respect to manual CAD drafting & calculating the Material.
- Can be configured for various industrial requirements by customizing the software using AUTOSYM & AUTOSPEC.
- Revision management is inbuilt in the software. This drawing software automatically marks clouds and reports the relevant details for any addition, deletion, or modification.



Piping Spooling Software

AUTOSPOOL is an automatic piping spooling software, used for generating piping Fabrication, Erection Isometrics & related reports. Which is based on the convenience of Fabrication / Erection work, site requirements, spool transportability. To achieve the best international construction practices and client's requirement standard. This software generates the Fabrication / Erection construction scope in Inch DÍA, Inch Meter and tonnage. It also calculates piping cut length, piping bending length, spool weight and surface area as required in the project.

Use of AUTOSPOOL

- Automatic and accurate Spool / Erection drawings
- Reduction in the upright construction work by at least 15%
- Automatic reporting at spool-level, joint-level, component
- Systematized processes
- 75% saving in time
- Reduction of errors in the work process
- Complete control on the job
- Revision Management and Project Management
- Reliable in every aspect of the work

AUTOSPOOL works with following inputs

Neutral file *.idf, *.pcf, *.impf which are generated from leading plant design software but not limited to PDMS, E3D, PDS, SP3D, AUTOPLANT, PLANT3D, ISOMECH etc.

Features of AUTOSPOOL

- AUTOSPOOL is open for customization
- Barcode Compatible
- Piping Cutting Optimization
- Consumable Estimate & Manpower Estimate
- Progress Updation in 3D Model Estimate & Manpower Estimate
- Integration with third-party software



Material Front Analysis (MFA) for Fabrication and Erection work

The Function of Module is to make analysis for matching the requirement of components for fabrication/erection of spools and according to matching result; an Engineer can list the Spools for Fabrication

Matching result possible categories are

- CPS (completely possible spools) – If complete material is available for a spool,
- PPS (partially possible spools) – If partial material is allocated for a spool,
- NPS (not possible spools) – If no material is allocated for a spool

Key Features

Identification of exact material front available for fabrication and erection work. Material planning can be done based on ETA of materials for next 3-6-9 months. Material constraint list can be generated.

Key Benefits

Helps purchase team to expedite the related material procurement and delivery

Project Control can make proper plan

Ensure usage of materials against Spools / Lines

Beneficiary Department / Team

Procurement, Project, Project Control, Fabrication, Erection

Beneficiary Organization

LSTK/EPC/EPCM/PMC/FACO/COCO



Pipe Spool Fabrication and Erection Software

SPOOLMAN / ERMAN is a Pipe Spool Fabrication and Erection software for planning, management of material & construction activities for spool fabrication & erection at shop/site. This pipe spool erection software is useful for effective matching front analysis, work allocation, material allocation, piping material control and tracking of spools & erection items. The product is valuable for an efficient macro and micro level construction planning beginning with issuing materials, fabrication/erection of spools, quality inspection & testing, painting till the generation of line history sheets, transportation of finished spools to lay-down for storage, dispatch to site for erection, mechanical clearance, insulation, final clearance of loops & systems.

Functionality of Combination Solution



Project Management, Material Control & Planning, Matching Front Analysis, Work Allocation, Material issuance, Production, welding, NOT QA/QC, Dimensional Check, Spool Clearance	
Spool Pressure Testing	Erection Planning
Surface Preparation & painting	Erection Construction
Lay-Down & Storage	Pipe Doubling
Spool Dispatch	ISO Erection Clearance
Loop Mechanical Clearance, Loop Pressure Testing, Loop Boxup, Painting & Insulation, System Clearance & Precommissioning. Client & Contractor billing, Project Dossier.	
Review, Line History Sheet, Flange History Sheet, Loop History Sheet, System History Sheet, Daily / Weekly / Monthly Progress Report, Material Reconciliation etc.	



ENSURE EFFICIENCY IN PLANT CONSTRUCTION

SPOOLMAN & ERMAN is Piping Spool, Material and Construction, Management Software.



SPOOLMAN Features

- Construction Release
- Material Control
- Matching Front Analysis
- Construction Planning
- Front Release
- Production



Structural Material Planning and Civil MTO Measurement

STRUCTMAN :

STRUCTMAN is the software solution for managing STRUCTURAL activities on construction site. All activities related to fabrication of structural assemblies like FITUP, Welding, NDT, Painting, Structure History, Transportation, Storage in Lay down till Dispatch for erection site is managed efficiently through various inbuilt modules like Engineering Material Control & Planning, Production, Welding, NDT, Painting, Laydown & Dispatch.

CIVILMAN :

CIVILMAN is the solution for managing civil construction activities on the site. All activities related to Construction of civil structures like Earthwork, Piling, Concreting, masonry and plastering, Flooring, Waterproofing, Doors/windows, Painting & other Misc. works are managed through this solution.

FEATURES IN DETAIL

ENGINEERING

- Intelligent way of Coding of all Structural Steel Items
- The software has Facility / Provision to upload Tender, MTO and AFC Qty. for Structural Steel items.
- Engineering MTO Analysis w.r.t Tender as well as AFC Qty. (Approved for Construction) at item level.
- Generation of Summarized Report in Tabular Form for comparison of Tender, MTO & AFC Qty.
- Generation of Variance Statement for Management Approval to manage the Contracts as per terms and conditions. It will also help in Updation of Estimated Budget, Budget Forecast, and Cost Control.
- Facility to upload Structural Master Data with break-up details like WBS number, Unit No., GA Drg. No., Fabrication Drg. No., Assembly No., No. of Assemblies, Weight of Assembly and so on.



PROCUREMENT

Provision to define Procurement activities like.

- MR
- RFQ
- Bid Receipt
- Evaluation
- Recommendation
- Order Placement
- Inspection and Testing
- Manufacturing & Delivery

SHOP FABRICATION, ASSEMBLY & DELIVERY

- Provision to define Structural Fabrication and Assembly activities like.
- Sub-ordering of Materials (if applicable)
- Receipt of Materials
- Manufacturing
- Assembly
- Inspection and Testing
- Despatch and Receipt at Site

ERECTION AT SITES (FIELDS)

- Provision to define Structural Erection activities like.
- IRN (inspection release note for Assemblies fabricated by Fabrication Contractor)
- Material Shipped / Dispatched from Structural Fabrication Contractor
- Material Received at Site (receipt of fabricated Assemblies at site)
- Material Issued (issuance of fabricated Assemblies to Erection Contractor)
- Erection of Assemblies
- Alignment, Grouting & Bolting
- Fire Proofing
- Painting
- QC final clearance etc.



PROJECT CONTROL ACTIVITIES

- Progress monitoring on Quantitative / Efforts (Man-hour) / Cost basis
- Activity-wise Planning, Scheduling, Monitoring and Progress Reporting
- Reporting at different levels like WBS, Unit and Complex levels, with activity-wise breakups with Trends / Profiles
- Calculation of %age Progress for each phase with Forecast / Curves
- Generation of reports in .xlsx, pdf,.txt formats for ease of customizing

TRACKING AND MONITORING THROUGH RFID / BARCODES

Latest RFID / Barcode Technology can be used for Tracking and Progress Monitoring at various stages like.

- Receipt of Fabricated Assemblies at Sites
- Allocate Storage Space to Assemblies and identify Location
- Issuance of Fabricated Assemblies to Erection Contractor
- Erection Progress etc.

Output reports :

- Fitup report
- Welding report
- NDT report (RT,UT,DPT,MPT)
- Structure history sheet
- Painting
- Laydown report
- Dispatch report
- Progress review report
- Welder performance report

CIVILMAN

CIVILMAN is the solution for managing civil construction activities on the site. All activities related to Construction of civil structures like Earthwork, Piling, Concreting, masonry and plastering, Flooring, Waterproofing, Doors/windows, Painting & other Misc. works are managed through this solution. Main Civil structures are logically divided into structural items like Foundations, Pedestal, Columns, Beams, Slabs, Walls, Floor & Ceiling etc. with reference number, Grid location, Elevation positions etc. Status of Civil construction activities are recorded as per daily progress in Construction site in the system. Stage wise



progress of individual civil structural items (foundation, columns etc.) are recorded & monitored for opening the front/scope of next level of activity.

Output reports :

- Monitoring the status of activity completion for civil structural items
- Creation of reports for activity completion of civil structural items
- Generation of List of activities completed for Main Civil structure
- Generation of List of activity pending for completing Main Civil structure
- Reports of activity Schedule data & actual completion date

Reports of estimated quantum & actual quantum of work as per data of construction completion



EQUIPMAN is Construction Equipment Management Software for managing all the equipment related activities in the project. EQUIPMAN has Integration with 3D Model for Equipment position & location review to aid in erection planning. Construction Equipment Management Software is also used for Planning & Monitoring of Equipment Erection Scheduling, delay analysis, rescheduling, delay impact analysis of dependent disciplines like Piping, Instrumentation etc.

EQUIPMAN generates Equipment Master List input data from P&ID containing Equipment Tag numbers, Equipment weight, Orientation, Equipment size, connected piping lines information etc. these are used for monitoring & managing activities

List of Equipment nozzles, Nozzle connected pipelines, Equipment nozzle connected piping spools etc. are interlinked for opening piping erection front based on Equipment Erection. Total number of Equipment to be erected, total Scope of Erection work in Tonnage, completed work, Balance Scope for erection are monitored efficiently.

Equipment Erection / Installation Status / Documented Proofs right from receipt, Inspection, Clearance, Transportation, Erection, Alignment & Grouting, Painting & Insulation, Pre-commissioning till Start-up is maintained in the software for records and Operation & Maintenance (O&M) in future.

EQUIPMAN manages all detailed activities like

- Equipment Ordering
- Vendor Expedition
- Equipment Receipt at Site
- Equipment Inspection
- Equipment Transportation
- Equipment Lifting Analysis Approval Documentation
- Equipment Lifting, Equipment Erection
- Equipment Alignment & Grouting
- Equipment Internal Cleaning
- Equipment Surface Preparation and Protective Coating
- Equipment Insulation, Equipment Pre-commissioning
- Equipment start-up, Final Completion
- Equipment Billing based on Approved schedule of Rates(SOR)
- Sub-Activity Completion Breakup



Features

EQUIPMAN generates Equipment Master List input data from P&ID containing Equipment Tag numbers, Equipment weight, Orientation, Equipment size, connected piping lines information etc. these are used for monitoring & managing activities

List of Equipment nozzles, Nozzle connected pipelines, Equipment nozzle connected piping spools etc. are interlinked for opening piping erection front based on Equipment Erection. Total number of Equipment to be erected, total Scope of Erection work in Tonnage, completed work, Balance Scope for erection are monitored efficiently.

Equipment Erection / Installation Status / Documented Proofs right from receipt, Inspection, Clearance, Transportation, Erection, Alignment & Grouting, Painting & Insulation, Pre-commissioning till Startup is maintained in the software for records and Operation & Maintenance (O&M) in future.



20

ENIMAN is used for managing all the electrical & instrumentation related activities in the construction project.

Instrument Master List data is auto generated from P&ID containing information against Instrument tags is used for scheduling & monitoring the Installation activities of all tagged Instruments. Instruments Installation reports creation & documentation of the reports are managed for final dossier creation. Electrical Items Installation, Earthing Lugs Installation, cabling activities can also be managed with this solution.



Pre-commissioning & Commissioning Software

PCAM is a detailed monitoring of system-level precommissioning & commissioning progress with respect to different disciplines like PIPING/ STEEL-STRUCTURES/ CIVIL / E&I/ EQUIPMENT/ FIRE&SAFETY/ HVAC relating multi-discipline activities on System & Sub-Systems. Systems are defined and Sub-systems identified within Systems.

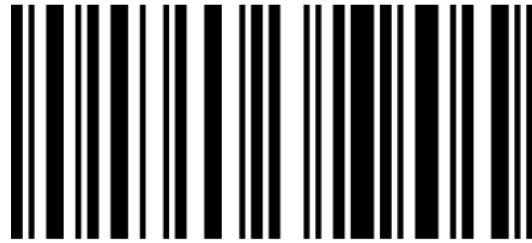
Pre-commissioning & Commissioning module is used for Process & Utilities systems including Infrastructure works like Building, Roads, Enabling works etc. This module generates the Commissioning Format Reports such as Format-I, Format-II, Format-III, Format-IV and Format-V.

Discipline wise components like Tagged items from E&I, Assembly Tags from Steel structures, Tech-Structure like Beam tag number, Foundation tag from Civil line numbers/Loop numbers from Piping, Equipment Tags & Connecting Instrumentation for Equipment, are grouped under System & Sub-system heads. Users can update progress at discipline level, sub-system level (or) system level against the discipline wise tags and signed reports documented parallelly. Commissioning software offers facility to create punch points under discipline heads against systems/sub-systems. Punch points can be liquidated along with signed documentation within the system.

Data consolidation & overall monitoring at system-level is made easy. Monitoring sheet can also be exported in excel format. Complete documentation of a system can be generated by a click. System level backlog report & open punch points can be extracted for analysis and action. Overall, this module offers complete tracking of progress, documentation, backlogs, monitoring & control of Systems for pre-commissioning and commissioning.



EPC Asset Management Software



1234567890

TRACK N TRACING App is an EPC Asset Management solution, which can help EPC companies to maintain the records of inventory. In Oil and Gas industry spools and erection components used for fabrication and erection of spools. TRACK N TRACING EPC Asset Management uses RFID, Bar-code & QR Code technologies with the best RFID, Bar-code readers integrated with the TRACK N TRACING mobile app.





Computer Aided Design and Drafting (CADD)

Digital CAD is an engineering drawing software. It can be used for general purpose engineering drawings as well specific use cases such as spool drawings for EPC industry. DCAD is available as a SAAS application and can be used from within a browser.



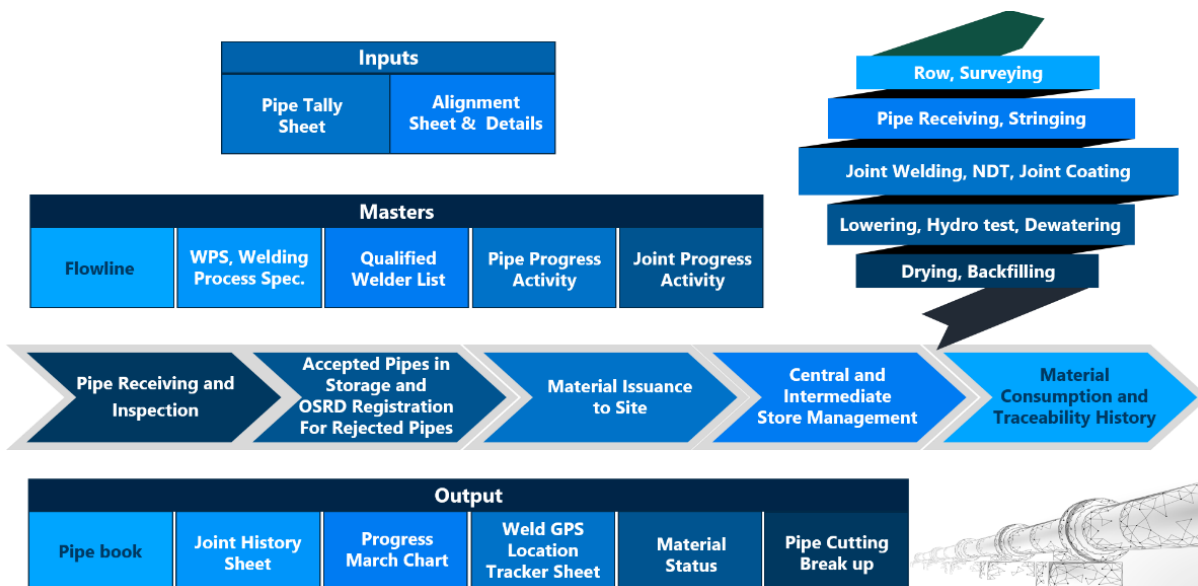
Piping Isometric Generation from *.idf, */pcf, *.ipmf format



Cross Country Pipeline Software

PROCCPL can manage cross country pipeline project construction aspects such as:

- Manages the progresses with Alignment Sheet and Pipe Tally Sheet details
- Material / Pipe inspection and receiving at central / designated store, maintaining OSRD register
- Pipe issuance to project site
- Material / Pipe transfer control between storage yards / locations
- Pipe level progress monitoring - (Receiving, Stringing, Welding, NDT, Lowering, Backfilling, Pipe bending etc.)
- Joint level progress updates including – Fit-up, Welding, NDT, PWHT, Hardness Test
- Hydro test, Cleaning /Gauging, Filling, Dewatering, Drying etc.
- Chain-age, Section and Station wise level progress monitoring and reporting
- Archiving of Pipe Book and Joint History etc.





REPORTS DESIGNER

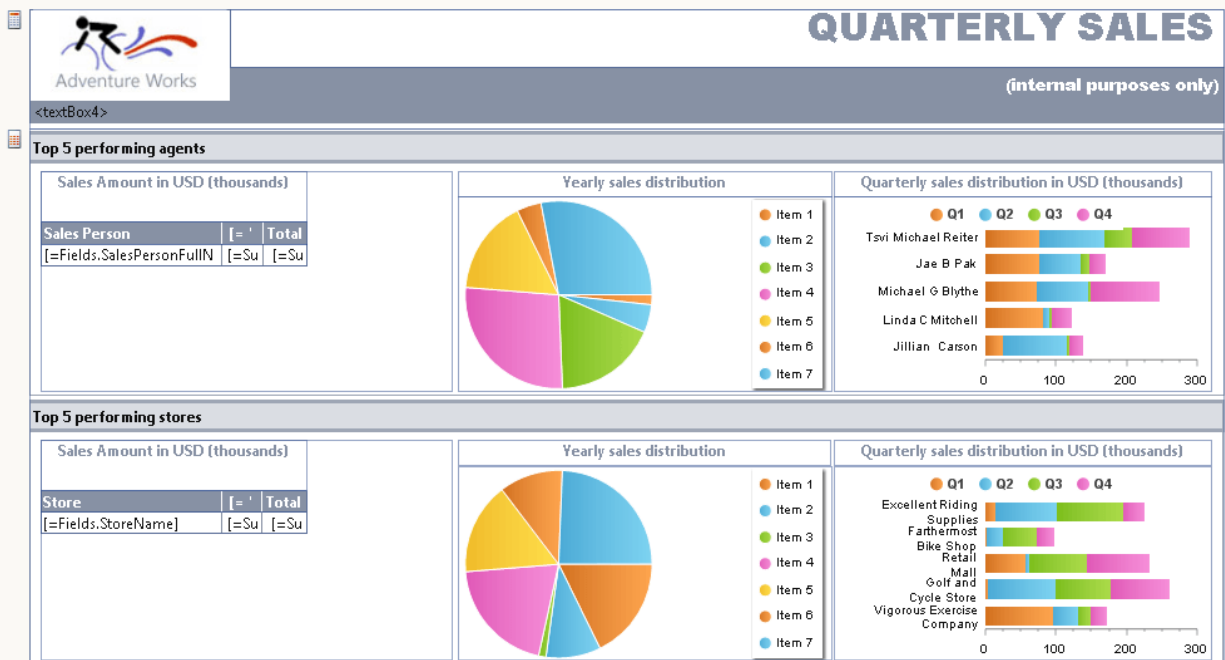
26

Reports Designer

Report Designer provides a graphical interface in which you can define data sources, datasets and queries, report layout positions for data regions and fields, and interactive features such as parameters and sets of reports that work together.

We have provided various types of connectors to connect to any data source and create a report in the format you choose. Data can be visualised in various chart and graph formats of your choice. Images, Logos can also be embedded.

0 cm 1 2 3 4 5 6 7 8 9 10 11 12 13 14 15 16 17 18 19 20 21 22 23 24 25





MIS REPORTS

27

Management Information System Reports

MIS Reports provides a summarised view of different verticals that are required to be monitored for the proper functioning of your Projects.



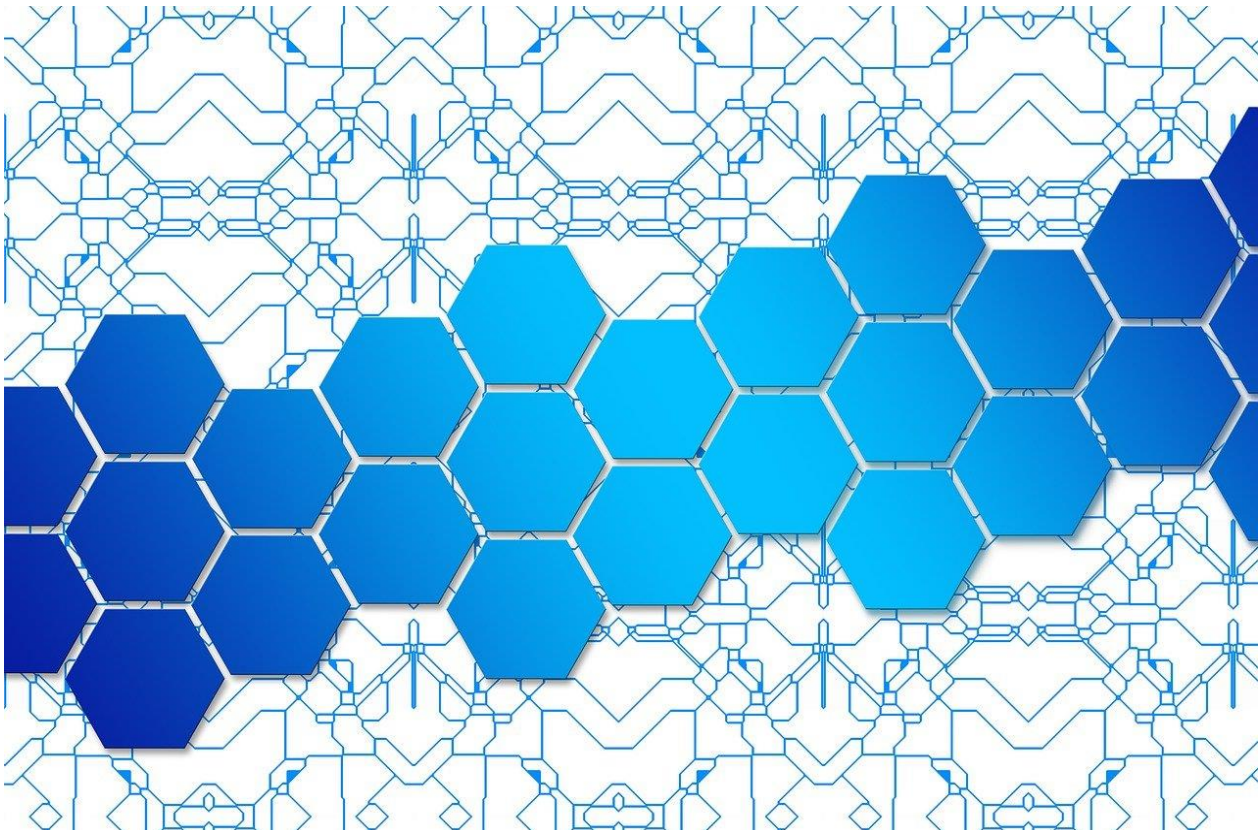
EPC Project Management and Project Control Software

EPCROMAN is widely used in disciplines like Piping, Civil, Structural, Electrical and Instrumentation, Equipment to manage the project functions like Engineering/ Ordering/ Tendering/ Manufacturing and Delivery/ Construction/ Commissioning where these disciplines and functions are managed by the agencies such as Piping and Steel Fabricators, EPC and LSTK contractors, Owners and Operators, PMC's involved in jobs related with Offshore / Onshore Petrochemical, Ship Building, Oil and Gas Refineries, Power Plants, Breweries, Renewable Energies etc.

INDIVIDUAL		EPCROMAN	APMO		
1	PGOLD	ORGANOGRAM, RESOURCE ASSIGNMENT (RAM), TIMESHEET, CALENDAR, INVOICE TRACKER (ITS), FILE TRACKER (FTS), EMPLOYEE PERFORMANCE (EPM) & OTHER OFFICE TOOL			
2	PRODASH	Interactive Project Management Dashboard (IPMD) & Efficient Reporting	14	MTOMAN-ISOMEC	MTO at Spool level, SPECS, Calculations, Piping Isometric
3	EPMO	End to End Project Management (Overall Schedule, Functional Schedule, WPR, MPR etc.)	15	AUTOSPOOL	Piping Spooling Operation, Spool / Erection Drawing, Spool / Erection MTO
4	PROCOST	Cost Estimation, Budgeting & Control (Including Cost Forecasts)	16	EFA & MFA	Engineering Front Analysis & Material Front Analysis, Indent for WHAM, Job Card
5	PROPLAN	Project Networking (Quantity Monitoring with Resource Loading)	17	SPOOLMAN-ERMAN	Fabrication & Erection Automation, Progress Monitoring & Reporting for Piping Works
6	PRODOCS-PROHOLD	Document Management (with Hold Management)	18	CIVILMAN-STRUCTMAN	Civil & Structural Works Progress Monitoring & Reporting
7	PROCHAL-PROSAFE	Risk & HSE Management	19	EQUIPMAN	Equipment Fabrication & Erection Progress Monitoring & Reporting
8	COCOSYS	Construction & Contractor Planning & Scheduling	20	ENIMAN-HVAC	Electrical & Instrumentation Progress Monitoring & Reporting
9	CONSIM	Constructability, Erectability	21	PCAM	Pre-commissioning and Commissioning
10	EPCROMA	Procurement, Mfg. & Dely., Tender Management	22	TRACK N TRACING	Barcode, RFID, Mobile app
11	LAPMA	Look Ahead Planning	23	DCAD	Computer Aided Design & Drafting (CADD)
12	WHAM	Warehouse Management	24	AUTOISO	Piping Isometric generation from *.idf, */pcf, *.jpmf format
13	DATABANK-ICGP	Databank for all disciplines, Item Codification	25	PROCCPL	Pipeline Projects Monitoring & Reporting
Value Added Products					
26	REPORT DESIGNER	Software used for designing reports for any of the above software	27	MIS REPORTS	Read Only access to Reporting module of each software

Services

We provide Services to our customers in the EPC Domain. Two of them are our main offerings: Product Development & Implementation & Construction Automation Partner.





Product Development and Implementation

01

Integrated Project / Piping Management System using EPCROMAN software

- Procurement / Material Management Services
- Project Management Services
- Construction Services
- Pre-Commissioning and Commissioning Services

02

Fabrication Shop Automation using RFID / Barcode technology

- Piping Spooling,
- Bay / Production Planning
- Cutting
- Kitting
- Barcoding

03

Software Development Services

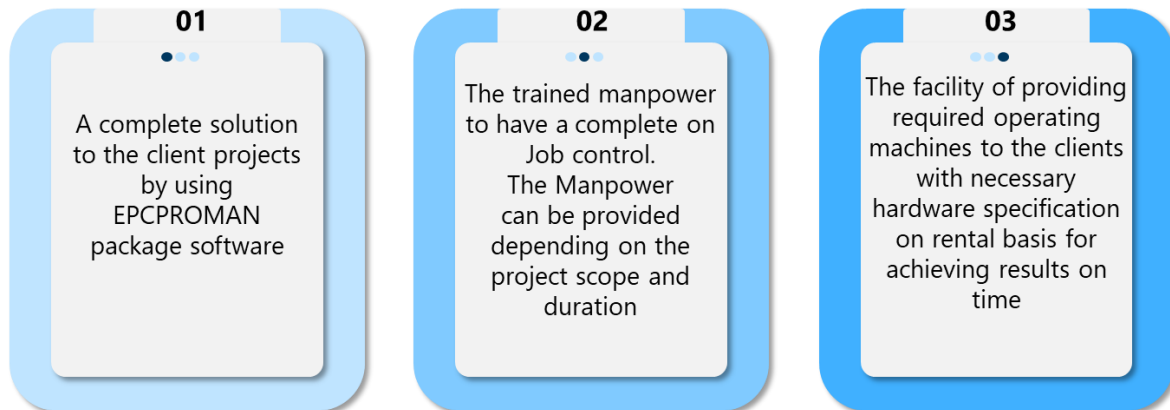
- Development and Implementation for automation of End-To-End Project Management Office at organization level





Construction Automation Partner

We work with PMC / EPCM / OWNERS Operators as a 'CONSTRUCTION AUTOMATION PARTNER' & assists them for achieving a complete control and automation in the construction of EPC projects by implementing EPCPROMAN software solution package on the projects for Construction Management, Project Control, Material Management, Progress Automation and Tracking. This service comes with an inclusion as below;



Client can get a clear exposure on their projects with seamless communication and co-ordination and a guaranteed results by adapting our efficient software and trained manpower services.

Construction Automation Partner Services are provided in three ways:

a) Piping Isometric Autospooling

We provide services for the Spooling of the Isometrics based on the inputs **PCF / IDF / IPMF** neutral files. Current production capacity is 10,000 ISO's per month.

b) On-Site Manpower For EPCPROMAN

We provide On-Site Manpower services for the Product Implementation and Site Support on EPCPROMAN at client location on Man-Month basis.

c) EPCPROMAN Manpower For the Project Service Agreement

We also provide highly skilled manpower experienced in Material Planning, Shop Fabrication, Construction and can execute the projects on EPCPROMAN. This manpower has executed projects at site locations.

Infrastructure

PARASCADD has state of the art infrastructure in Mumbai, India Offices and in offices in Europe & Dubai.

PARASCADD has two offices in Mumbai with a total capacity of 600 Engineers.

We have excellent communication Infrastructure, internet, and VoIP facilities. We also have added Cloud infrastructure as well. Our staff is well connected with each other via Microsoft Teams during all working hours.





PARASCADD Private Limited

Kushal Point, 4th Road, CGS Colony,
Ghatkopar West, Mumbai 400086.

Website: www.parascadd.com

Sales Email: sales@parascadd.com

General Email: info@parascadd.com

Tel: +91-22-2101-5100